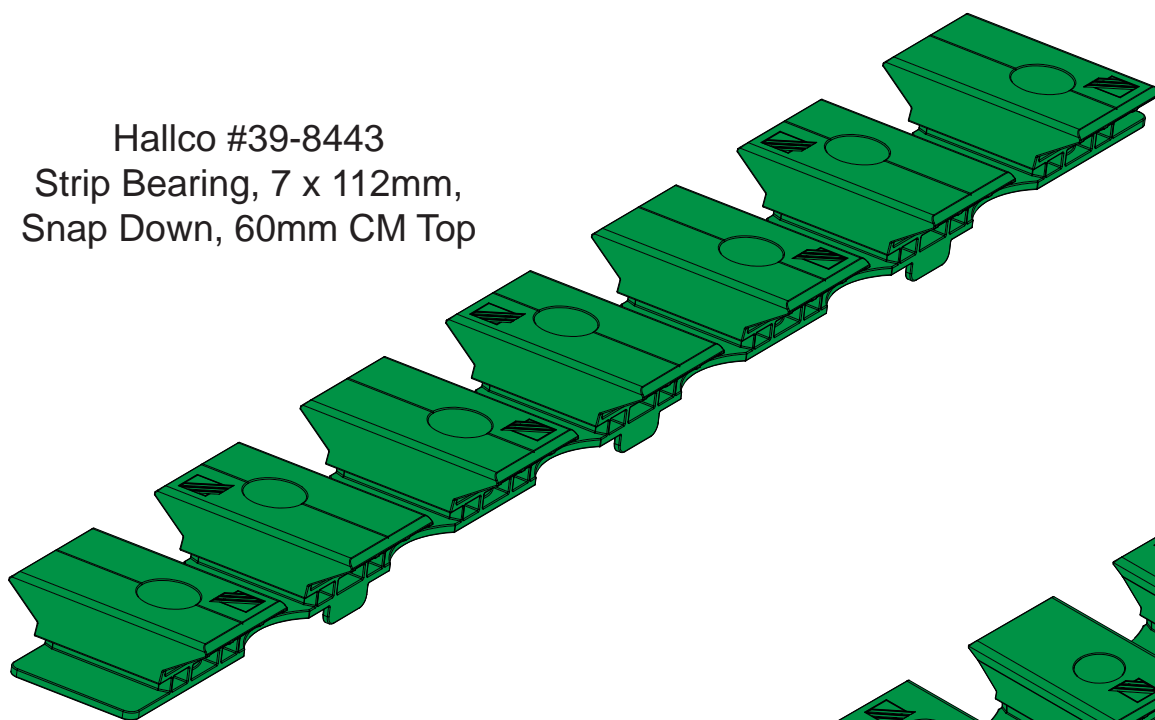


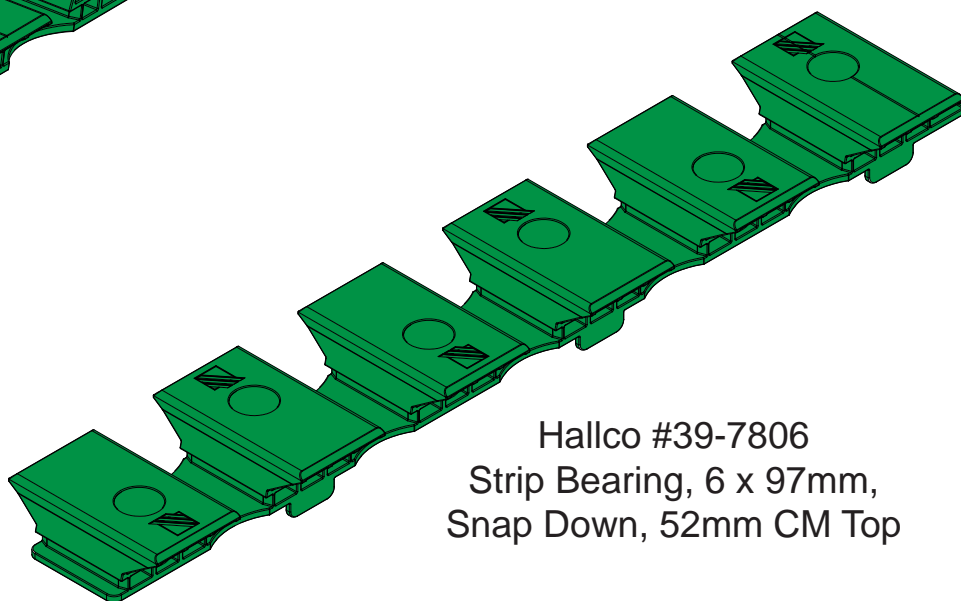
## Install Addendum Strip Bearings

100 mm through 140 mm frames. Manual, hybrid and electric control function.

Hallco #39-8443  
Strip Bearing, 7 x 112mm,  
Snap Down, 60mm CM Top



Hallco #39-7806  
Strip Bearing, 6 x 97mm,  
Snap Down, 52mm CM Top



## ABOUT THIS MANUAL

This document is to be used as a supplemental installation guide to be used in conjunction with the Installation Manual for your NEXUS™ LIVE FLOOR® conveying system.

Hallco Strip Bearings are designed to replace the sub-deck and FlicOn or Continuous Easy Bearings. This addendum is to be used in place of the "Sub-deck Installation" and "Bearing Installation" sections of the NEXUS™ LIVE FLOOR® Installation Manual. Once the Strip Bearings are installed you will continue to the "Installing the NEXUS Drive Unit" section of the NEXUS™ LIVE FLOOR® Installation Manual.

Hallco will periodically update these manuals. You can find the latest versions online at [www.hallco.eu/support/](http://www.hallco.eu/support/) or you can contact your Hallco representative. Also note, in the lower right corner of each page is the Hallco part number and, if revised, a revision letter of the manual. This will allow you to quickly identify if you have the latest version.



Use this QR code to quickly locate manuals on your smart phone.

## SAFETY

Your safety is the utmost importance to Hallco. Follow safe working practices while installing this system. Review all safety guidelines and pay attention to safety warning symbols as they will highlight specific dangerous aspects of the task at hand.

Only properly trained and authorized personnel shall install, operate and service Hallco equipment. Installers are expected to have a fundamental understanding of tool safety and safe working practices.

DO NOT deviate from these instructions or modify the equipment without written authorization from Hallco. Modifications can render the equipment unsafe and void your warranty.

Hallco is not responsible for equipment damage or personal injury as a result of failing to follow these instructions or failing to incorporate safe working practices.

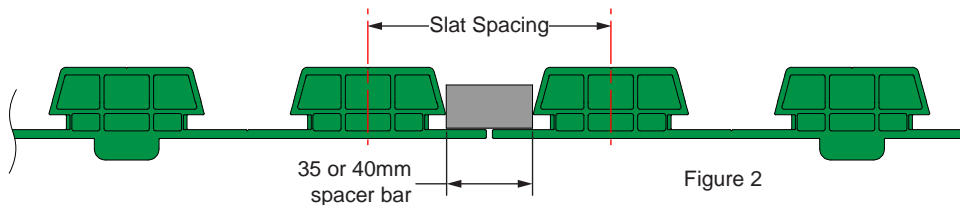
**FAILURE TO FOLLOW SAFETY GUIDELINES WILL RESULT IN INJURY OR DEATH.**

## REGARDING CE COMPLIANCE

The NEXUS™ LIVE FLOOR® conveying system is characterized as "Partly Completed Machinery" per article 1, section G of the Machinery Directive. **Please refer to the CE compliance sections of your NEXUS™ LIVE FLOOR® Installation Manual for further information.**

## STRIP BEARING INSTALLATION

1. Begin by running a string down the center of the trailer frame. Verify the string is centered along the length of the frame as it will determine the placement of the slats (fig. 1).
2. Determine how many Strip Bearings per cross member you will need. Set the Strip Bearings end to end along the width of the cross member. Use a spacer bar, or measure the center to center from one Strip Bearing to the next to ensure the Strip Bearings are properly spaced (fig. 2).
  - Use a 35mm [1.38"] spacer bar for 97 mm slat spacing.
  - Use a 40mm [1.57"] spacer bar for 112 mm slat spacing.



Depending on the number of slats, one Strip Bearing per cross member may have too many bearings. It may be necessary to cut some bearings from one Strip Bearing on each cross member for proper fitment.

3. Now that you have determined the number of Strip Bearings needed. Align the entire row of Strip Bearings with the string from step 1. Making sure the string is aligned with the groove in the bearing face, or the groove between two bearings.

Strip Bearing placement is determined based on the number of slats in your system. If your floor has an **ODD** number of slats you will align the string with the groove located on the top face of the strip bearing. If your floor has an **EVEN** number of slats you will align the string with the groove located between the bearings (fig. 3).

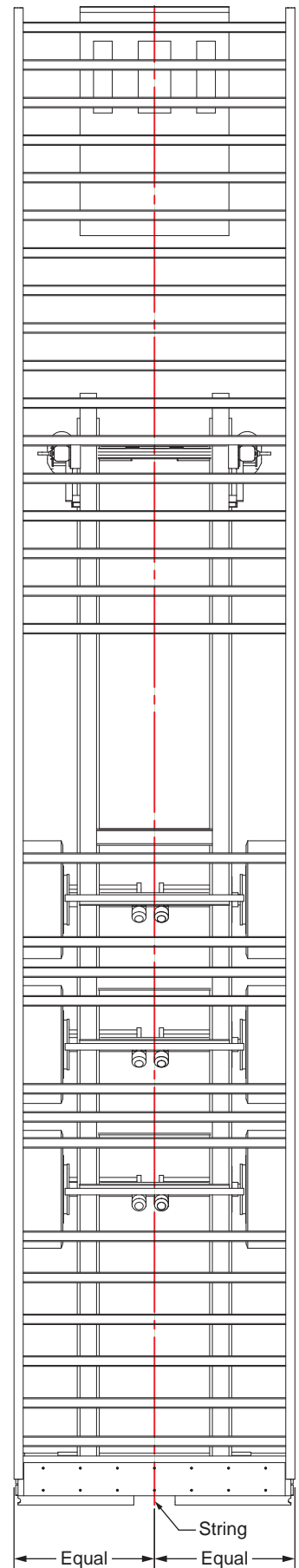
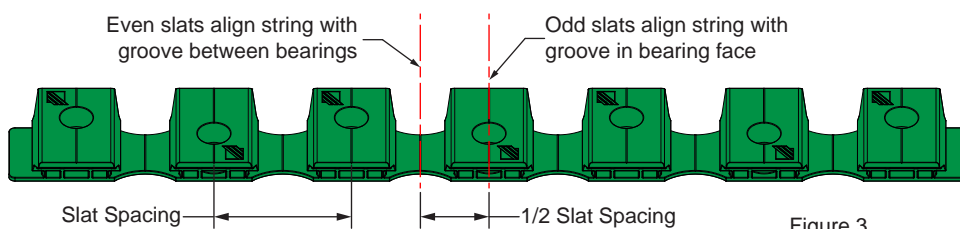


Figure 1

4. Align each Strip Bearing to the same side of the cross member using the tabs on the bottom of the Strip Bearings as guides (fig. 1) when Strip Bearings are properly aligned, clamp into place.
5. Fasten Strip Bearings through hole in center of bearing using a 6mm [1/4"] rivet or self drilling screw. Fastener must be rated for a minimum shear strength of 3,025 N [680 lbf]. **Fastener must have a wide head or include a washer to increase the clamping surface area of the fastener.**



Fastening by screws are for steel cross members only. Not for aluminum cross members.

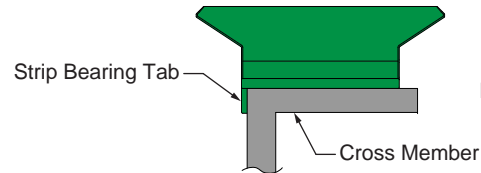


Figure 1

6. Fasten at each bearing location making sure cross members are clean of drill shavings or other debris that will interfere with the flat placement of the Strip Bearings (fig. 2).
7. When fastening adjacent Strip Bearings be sure to make one final measurement from bearing to bearing to ensure bearings have not moved during the installation process.
8. Repeat the process for all cross members. Continually checking alignment as you go. Mis-aligned Strip Bearings will prevent slats from installing, cause binding or premature bearing wear.
9. Once all cross members have Strip Bearings installed continue to the "Installing the NEXUS Drive Unit" section of the NEXUS™ LIVE FLOOR® Installation Manual.

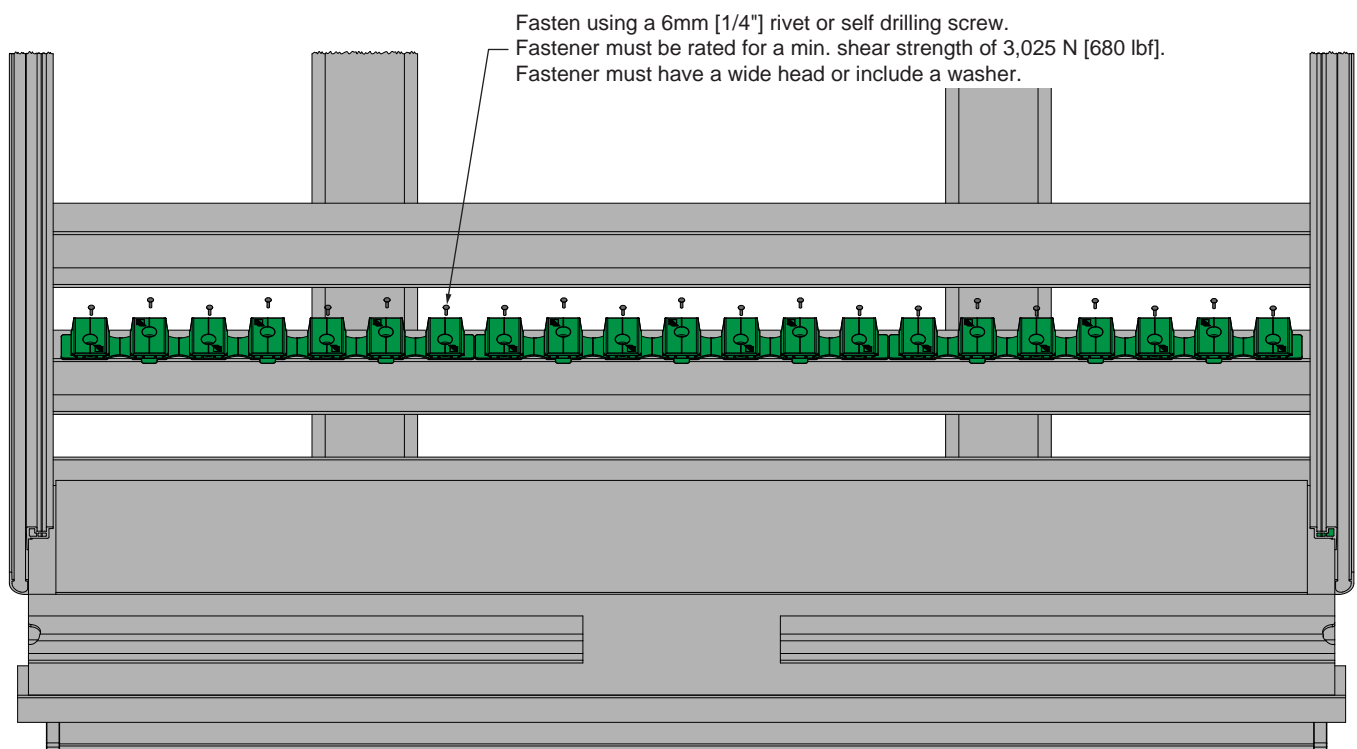


Figure 2